

TRUSS

What is TRUSS Scanjig?

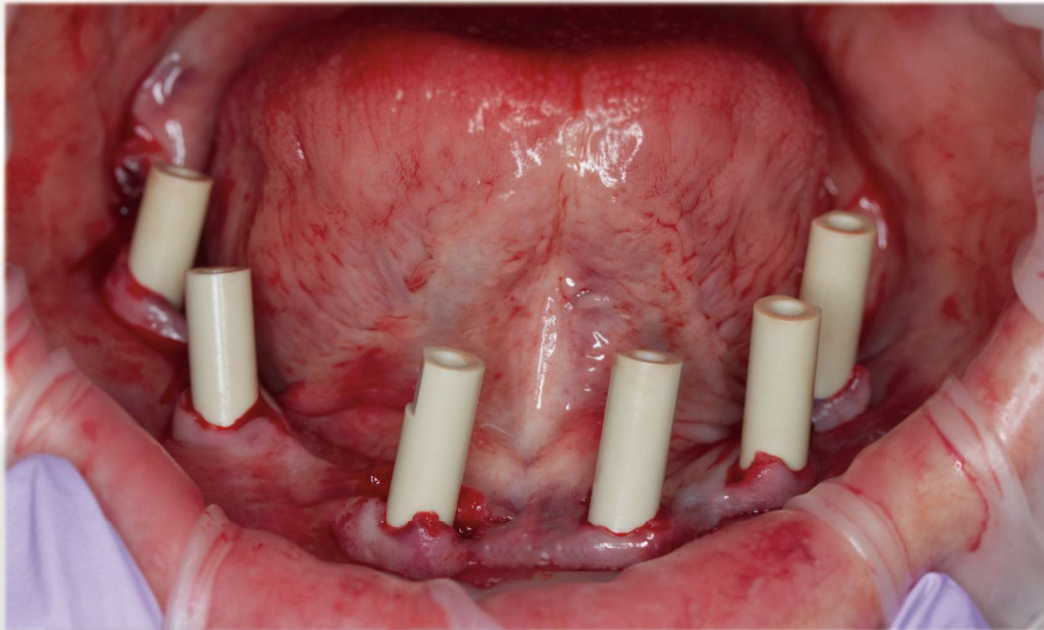
Scanbody + Verification Jig

The term Truss Scanjig is the combination of Scanbody and Verification Jig.

This unique scanjig is designed to capture accurate position data of the MUAs for all on-x full arch cases solely using an intraoral scanner.



Conventional Scanbody VS Truss Scanjig



The Conventional Scanbody is not designed for edentulous..

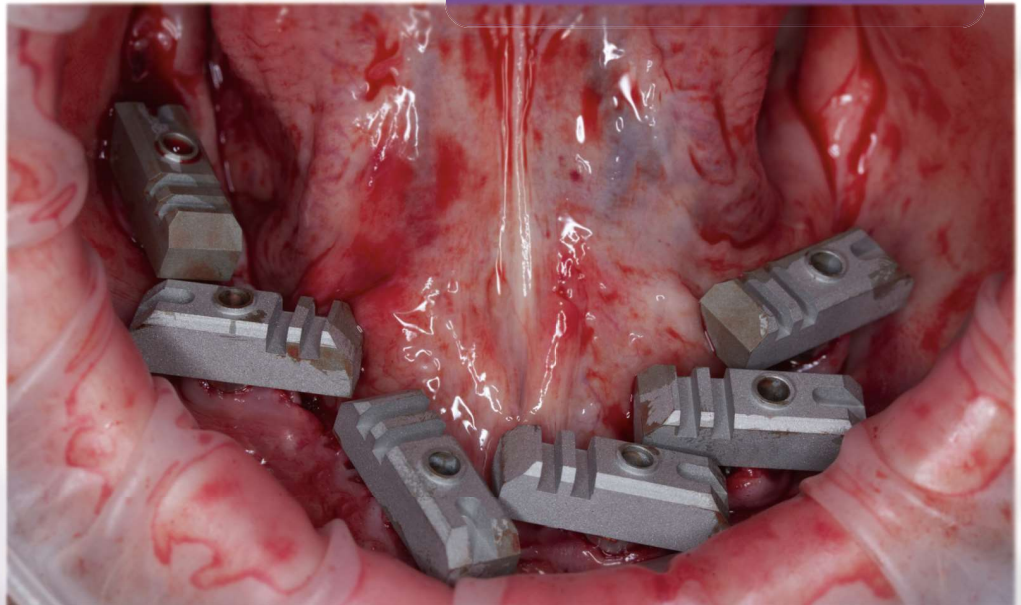
- Exposed tissue, light reflection caused by saliva, blood, and other objects such as flapped tissue can easily affect the accuracy of the scanning.
- Due to its vertical high profile, Intraoral Scanner must move up and down to capture the scanbody, increasing the chance of distortion.
- Only 2-6 surfaces to be utilized in the design software to navigate the position and angle.

Conventional Scanbody

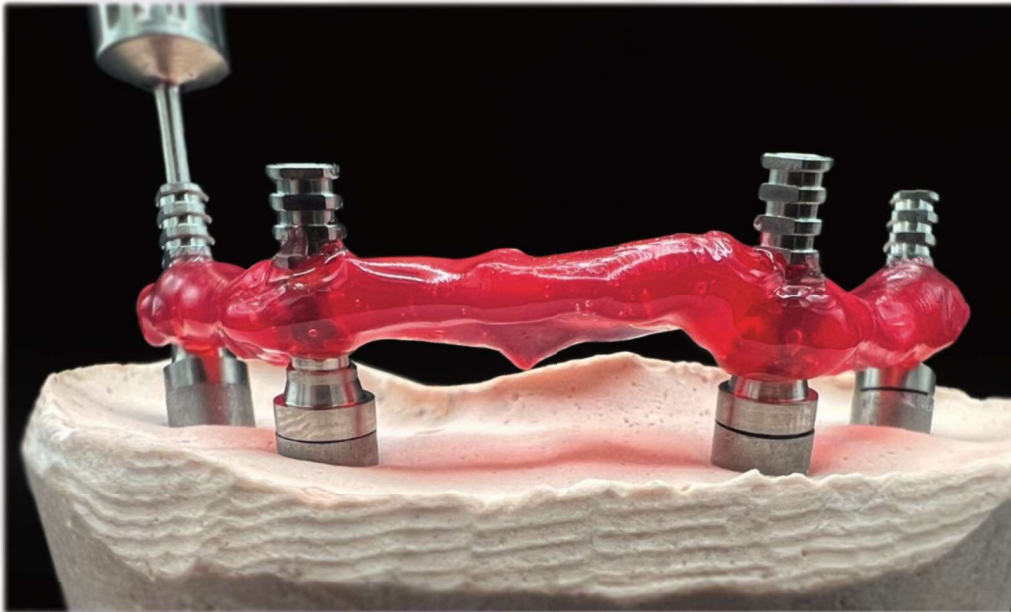
Truss Scanjig is specifically designed for edentulous..

- Scanning the truss scanjig is as easy as scanning the occlusal surfaces of natural teeth.
- Objects such as saliva, blood, and flapped tissue that could cause distortion are covered by the scanjig when scanning.
- With 11 unique surfaces that are aligned with library data in the design software, it ensures accuracy when navigating its position and angle.

TRUSS Scanjig



Conventional Verification Jig VS Truss Scanjig



Conventional Verification Jig

The Conventional Verification Jig requires too many steps and components to fabricate.. (typically 8 steps)

- Placing cylinders
- Applying resin (usually far apart)
- LightCuring
- Sectioning into pieces
- Placing in the mouth
- Applying resin to the sectioned pieces
- Light curing
- Remove

Truss Scanjig streamlines the process to fabricate a verification jig..

(only 4 steps)

Placing the scanjigs -

Applying resin -

Light curing -

Remove -



TRUSS Scanjig



What's in the box?



Truss Scanjig (4,5,6, or 7)

Truss Lab Analog (4,5,6, or 7)



3 Truss Connectors

Type IV Dental Stone 70g (low expansion)



15ml Measuring Spoon

3ml Flowable Pattern Resin (LC)
(low shrinkage)



Case Box (for master cast)



How to use?

1. Preop scan with any type of references (Fiducial Marker, Stackable Guide Base, etc.)

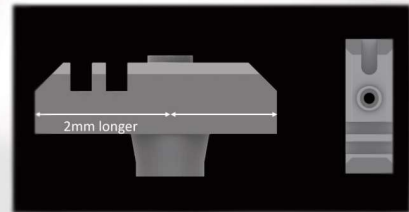
2. Place the scanjigs on the MUAs BEFORE suture

💡 Start placing from the most distal implants to mesial implants

💡 Two notches - long side
One notch - short side

💡 Make sure the scanjigs are placed as close as possible (almost touching each other) by rotating them when they are not fully screwed down.

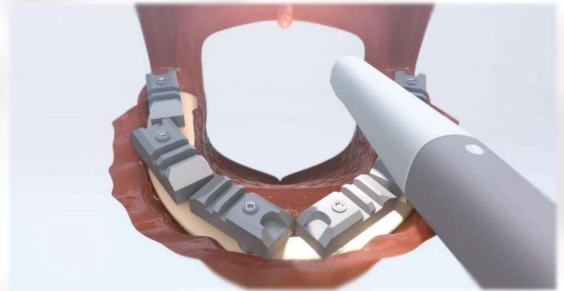
💡 Easier to check the seating of scanjigs on the MUAs before suture



3. Scan

💡 Scan PATH: Occlusal (Top) surface only, from one end to the other end

💡 Due to the "easy to scan" design, no need to tilt the scanner to scan buccal and lingual surface



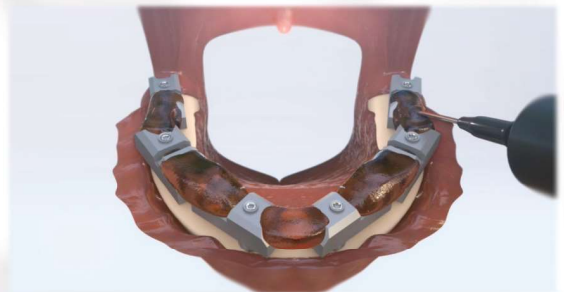
4. Lute the truss scanjigs as one piece (verification jig)

💡 Ensure to clean and dry as much as possible before applying pattern resin for better bonding

💡 Inject the resin from the inner surface of the notches to be filled 100%

💡 Wrap the side surfaces along with the notches to strengthen the connection of each scanjig

💡 In case of debonding, it needs to be re-placed on the MUA and re-luted



5. Light Cure

6. Remove the linked verification jig



7. Suture



How to use?

8. Scan tissue (with the references that was taken at step #1)

💡 Taking an impression and scanning the impression of the lower tissue is recommended due to the difficulty of scanning the lower arch with blood and moving tongue.



9. Send the digital files to a laboratory for the fabrication of a temporary

10. Screw lab analogs onto the verification jig

💡 Hold onto each analog when screwing down to avoid any torquing force



11. Spatulate 15 ml water and the Type IV dental stone

12. Pour the mixed dental stone into the Truss case box

13. Bury the verification jig into the stone

💡 Wait for 30-40 minutes to fully set



14. Send the physical master cast to a laboratory for the fabrication of the final prosthetic

GET IN TOUCH WITH US TO EXPLORE MORE
WORKFLOW OPTIONS THAT SUIT YOUR TEAM.





truss scanjig

All



DW Dental Solutions

<https://www.dwdigitaldental.com>

DW Dental Solutions | Digital Workflow Experts

Truss Scanjig. The digital + analog verification jig that guarantees the

